



1300 511 878

www.luminagoldcoast.com.au

Lumina is a 9.5-hectare, premium commercial development, within the 200-hectare Gold Coast Health and Knowledge Precinct in Southport, Queensland. Lumina is the Precinct's final development site, and the only opportunity to secure development-ready commercial land, or lease commercial space at the heart of this thriving innovation-based community.

World-Leading Healthcare AI from the Gold Coast

Datarwe has developed a world-leading medical data platform, that supports a new generation of real-time, AI-enabled tools for doctors, health staff, researchers and innovators.

Its technologies are changing the way data and real-world evidence in healthcare is generated, interpreted and actioned, and enabling better outcomes for clinicians, researchers and patients.



Meet Datarwe

Datarwe was founded in 2019 to support a collaboration with government, healthcare providers and leading healthcare ecosystem partners in harnessing the power of clinical data.

datarwe

The smart technology uses live patient data to unlock new insights for hospitals and health professionals during patient care. It also provides a platform of rich de-identified data for clinicians and researchers, and for testing new innovations in the health system.

The Platform is set for roll-out at 14 hospital sites within Queensland in coming years. There are also national and even international deployment opportunities in the pipeline. Most notably, the Datarwe team is working closely with MIT on their world's largest critical database 'MIMIC.'

What is AI in Healthcare?

Artificial Intelligence (AI) and Machine Learning are a group of 'cognitive technologies' that use data to create insights. They may replicate and extend our current abilities, and actually 'learn' - becoming even more precise over time. Some of the uses include:

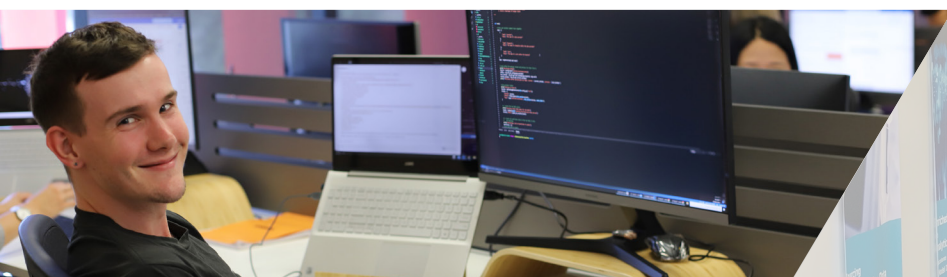
- Advanced detection and diagnosis
- Identifying and analysing risks
- Predicting treatment outcomes
- Personalising treatments

COHORT

Datarwe joins Gold Coast Health and Griffith University as an 'anchor tenant' at the Cohort Innovation Space within Lumina.

Cohort is Lumina's home for start-ups and founders who want to surround themselves with like-minded visionaries and game-changers. It is a place where innovators, researchers, entrepreneurs, and industry experts come together to access support and propel their novel ideas to market.

Cohort boasts nearly 46 coworking desks, 21 private offices, meeting rooms, an AI lab, 3 PC1 and PC2 scientific labs, and a 150-person event space. Its tenants can also take advantage of the network of talented neighbours within the Precinct, including world-renowned researchers, scientists, clinicians, health and technology experts, and established leaders in academia at Griffith University, Gold Coast University Hospital - a major Australian teaching hospital, and the cutting-edge Gold Coast Private Hospital.





The 'Clinical Data Nexus' in Action

Datarwe's precision medicine data platform, Clinical Data Nexus (CDN), helps medical researchers, clinicians and innovators to develop new diagnostic tools and treatment options for patients. The CDN captures patient information from acute healthcare monitoring devices and medical records, then uses advanced tools to process the data.

This technology has been used at the Gold Coast University Hospital (GCUH) Intensive Care Unit, as a virtual dashboard of real-time patient information that helps doctors monitor, treat and plan resources for critically ill patients. The Dashboard is a key communication tool for hospital teams to visualise each patient's clinical status and improvement or decline, as well as operational measures such as predicted discharge, bed availability and staffing.

Datarwe is also using AI systems with real-time heart monitors in the Intensive Care Unit. Beyond just diagnosing arrhythmias on an electrocardiogram (ECG), the intelligent system is also using the streams of ECG data to predict outcomes for patients with traumatic brain injury. It has used the CDN to 'learn' from real data, and is currently undergoing validation.



The **Clinical Data Nexus** will enable clinicians and medical researchers to **more rapidly collaborate** in the development of **next generation AI clinical diagnostic tools and technologies**.

Dr Kelvin Ross
Chief Technology Officer,
Datarwe



Lumina is the Ideal HQ for Healthtech Innovators

The unique Lumina ecosystem and close proximity to core partners such as Griffith University and Gold Coast University Hospital was essential to supporting Datarwe's rapid success since relocating its HQ to the Precinct in 2020.

The Datarwe team enjoys access to core facilities within Cohort, such as the purpose-built AI laboratory, meeting rooms, and flexibility to scale up and down. Dr Ross credits these benefits and the Precinct's easily accessible infrastructure as the main reasons for Datarwe's HQ choice.

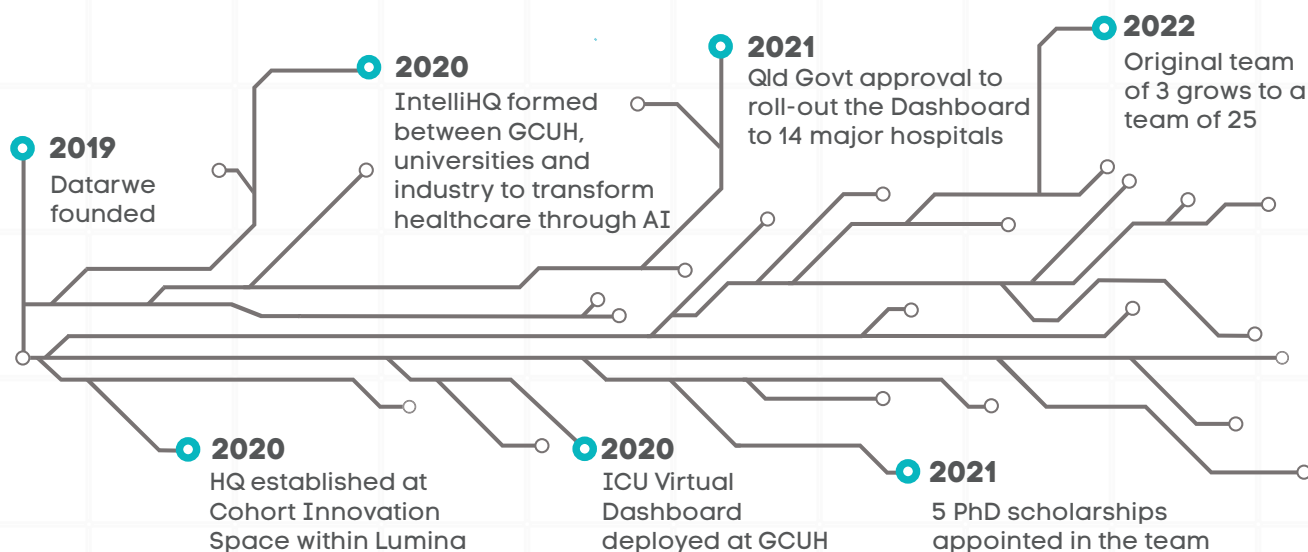
Being part of a **supportive and talented community** where you are always meeting new people in **collaborative spaces** is really important.

Dr Kelvin Ross
Datarwe



The Rapid Rise of Datarwe's Medical Innovation

Key Milestones on their Journey:



Datarwe Credits Three Components to its Success:



Access to real-time 'big data' that is cleansed and labelled



Growth of the highly-skilled current and future workforce



Access to healthcare system and partners, facilitators and growth pathways

Datarwe Leads the Way in:

- Creating a secure, scalable platform for clinical data
- Forging partnerships with universities, supporting research and the future workforce
- Establishing new structures and processes to facilitate partnerships, research translation and innovation, governance and data security

Datarwe Benefits the Community Through:

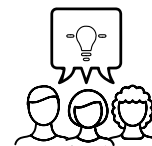
- Availability of the platform to support healthcare, research and innovation
- Increasing the exposure and growing the potential of a highly-skilled workforce, empowering the innovation economy
- Making an easier transition for future innovators in healthcare technology to access healthcare information, partners and networks

Why Lumina?

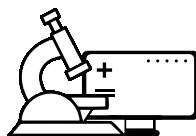
Large-scale flexible office space



Collaboration opportunities



Advanced technical laboratories



Increased visibility to new partners



Lumina is a precinct where **people are drawn in**. It fosters a learning culture. What we're doing here at Lumina really is **leading edge around the world**, and that's quite exciting.

Dr Kelvin Ross
Datarwe



Join the Workplace of the Future

Are you looking to secure workspace, or flexible ownership or leasing opportunities in the Gold Coast? Lumina is welcoming expressions of interest from service providers and organisations with new innovative ideas and market ready solutions in:

- Big data, data analytics and translatable applications
- Artificial intelligence, machine learning and robotics
- E-health and health software, integrated healthcare and medical technology
- Medical imaging, devices, wearable technologies and diagnostics
- Human genomics, chronic diseases and infectious disease
- Healthcare and specialist services and clinics
- Paediatric health and education services
- Advanced design and additive manufacturing
- Biotechnology
- Micro and nanotechnology and next generation molecules
- Support services and supply chains for life sciences, health and technology-related businesses.

Discover Lumina

Dedicated to growing the life sciences, health and technology businesses of today and tomorrow.

Have we sparked your interest?

1300 511 878

LUMINA



**Queensland
Government**